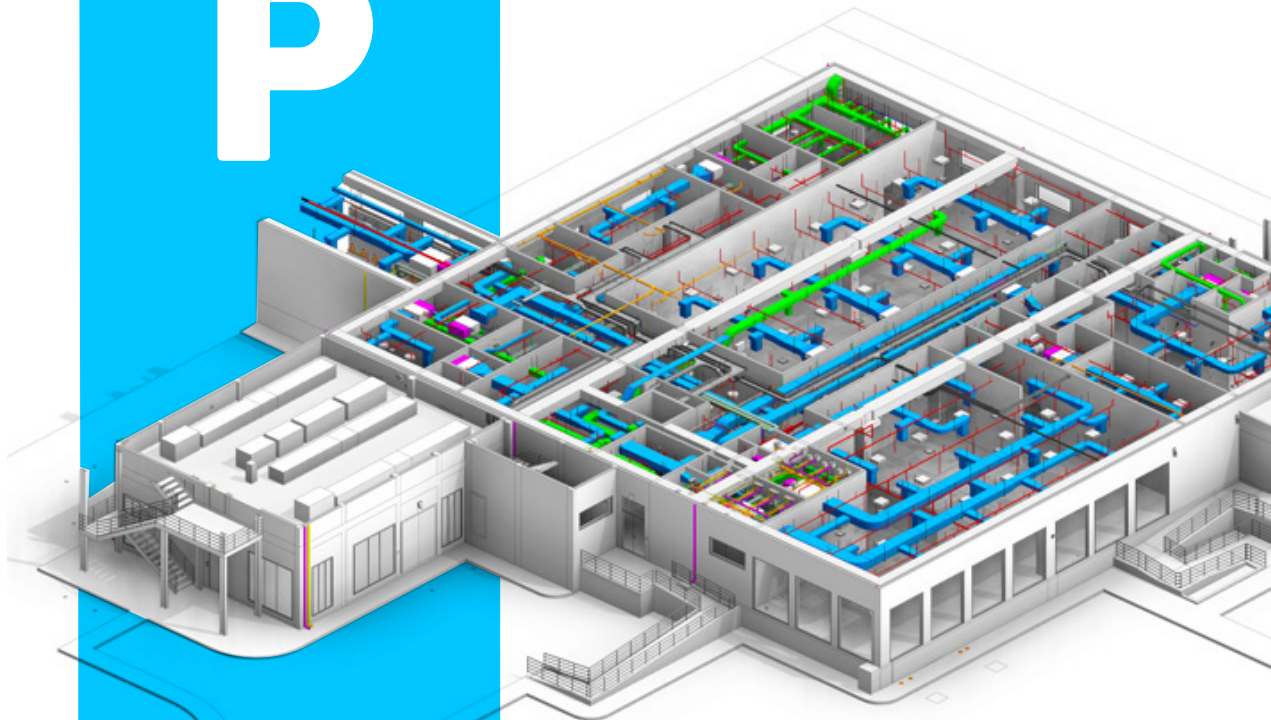


# R | AUTODESK® REVIT®

M  
E  
P



## LEARNING OBJECTIVE

To take full advantage of Building Information Modeling, the Autodesk® Revit® MEP Essentials training guide has been designed to teach the concepts and principles of creating 3D parametric models of MEP system from engineering design through construction documentation. The training guide is intended to introduce students to the software's user interface and the basic HVAC, electrical, and piping/ plumbing components that make the Autodesk Revit MEP software a powerful and flexible engineering modeling tool.

The objective is to familiarize students with the tools necessary to create, document, and print the parametric model. The examples and practices are designed to take you through the basics of a full MEP project from linking in an architectural model to construction documents.

## PREREQUISITES

1. Basic of MEP and Design Skills.
2. No Previous 3D Modeling experience is necessary.
3. Delegates should have a working knowledge of Microsoft and Windows.
4. Laptop and Mouse

## MATERIALS

1. Manual – Autodesk Revit MEP Essentials User Guide.

**DURATION : 12 Days**

**VENUE : Excellence  
Training Centre**

**PRICE: 2200 QAR**



## CHAPTER 1: INTRODUCTION

- MEP Interface
- Using the Included Working File
- Working with Views
- File Concept

## CHAPTER 2: BASIC CREATION TOOLS

- Opening a Revit Project
- Viewing 2D and 3D Model
- System Tab

## CHAPTER 3: BASIC EDITING TOOL

- Select Element
- Using filter
- The Align Tool
- Copy and Paste
- Arrays
- Extend and Trim
- Groups

## CHAPTER 4: STARTING A MEP PROJECT

- New MEP Project
- Linking an Architect Revit File
- Copy – Monitor Level and Grid
- Copy – Monitor MEP Fixture
- Initial Plan View
- Project Information
- Linking CAD File

## CHAPTER 5: VIEWS

- Controlling Visibility
- Elevation • Section
- Creating Callout
- Ceiling Plans
- View Template
- Section Box
- Scope Box

## CHAPTER 6: COMPONENT FAMILY

- Out of the Box Family
- Basic Family Creation

## CHAPTER 7: SPACE AND ZONE

- Room and Room Tag
- Creating Spaces
- Modifying Spaces
- Area and Volume Calculation
- Creating Zone
- System Browser and Zone
- Color Scheme

## CHAPTER 8: SYSTEMS

- System Browser
- Graphic Overrides
- Checking Systems
- System Inspector
- Duct Sizing

## 7 CHAPTER 9: HVAC

- Mechanical Setting – Duct
- Air Terminal and Mechanical Equipment
- Ducts
- Adding and Modifying Fittings
- Duct Systems
- Automatic Ductwork Layout

## CHAPTER 10: HYDRONIC PIPING SYSTEM

- Plumbing and Pipe Work
- Mechanical Setting – Pipes
- Piping Systems
- Adding Pipes
- Modifying Pipes
- Adding and Modifying Fitting
- Generate Pipe Layout

## CHAPTER 11: HVAC

- Adding Plumbing Fixture
- Modifying Plumbing Fixture



## CHAPTER 12: ELECTRICAL SYSTEMS

- Electrical Settings
- Electrical Component
- Cable Tray
- Conduit

## CHAPTER 13: DETAILING

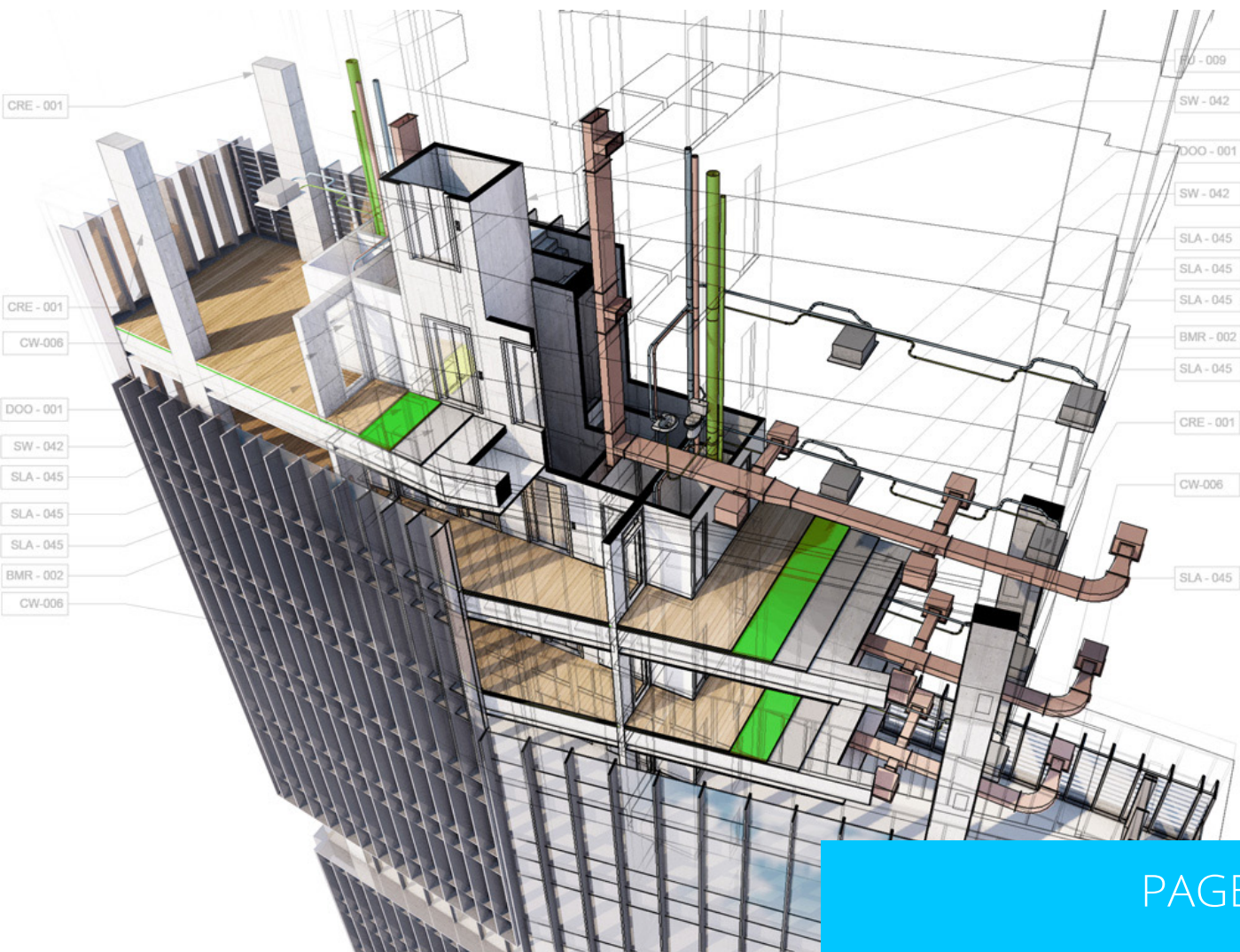
- Creating Details
- Adding Detail Lines
- Detailing in 3D
- Importing Details
- Editing Details
- Exporting Details

## CHAPTER 14: DOCUMENTATIO

- Setting Up Sheet
- Printing
- Tag vs Text
- Dimensions

## CHAPTER 15: PRESENTATIONS

- Custom Material
- Custom Lighting
- Exporting Image
- Walkthrough



# FOR INQUIRIES

## CONTACT US AT:

+974 7745 2105

+974 7442 2210

(REGULAR CALLS OR WHATSAPP)

## EMAIL US AT:

[anaas@excellence.qa](mailto:anaas@excellence.qa)

## OR VISIT OUR CENTRE AT:

44 BILAL BIN RABAH STREET,  
OPPOSITE TO AHLI SPORTS CLUB GATE NO : 1 ,  
VILLA NO : 22, DOHA QATAR, QATAR

